

MONTHLY MEMBERSHIP PROGRESS REPORT

District 3231A2

Results as of: 5/31/2024

GMT:

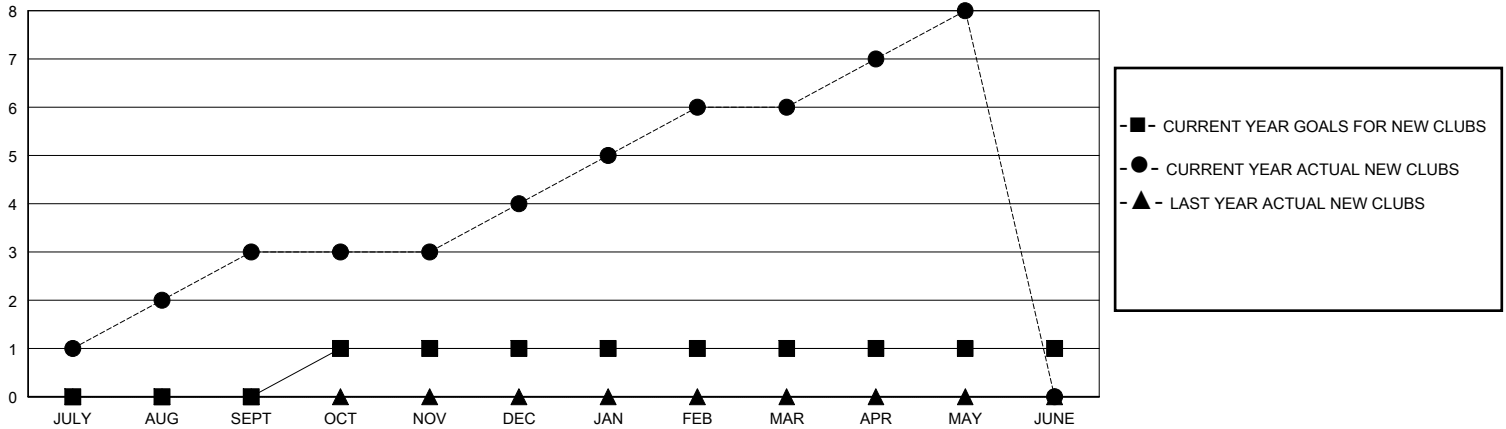
LOCATION INDIA

GMT CA

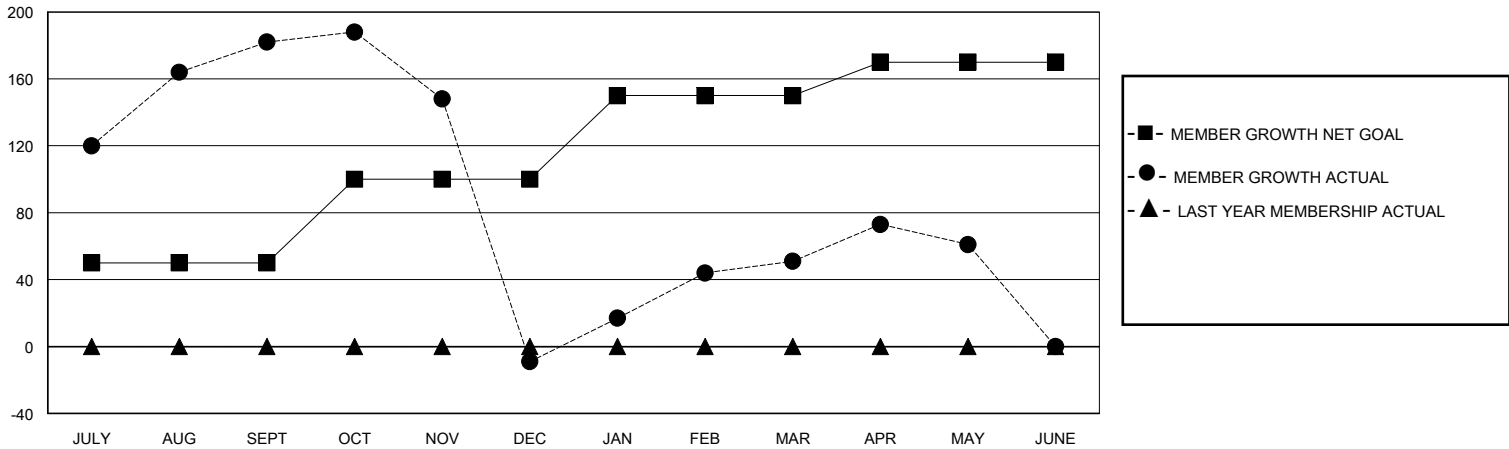
Clubs			
RESULTS FOR 2023-2024			
QUARTER	NEW CLUB GOAL	NEW CLUBS	DROPPED CLUBS
JULY/AUG/SEPT	0	3	2
OCT/NOV/DEC	1	1	1
JAN/FEB/MAR	0	2	1
APR/MAY/JUNE	0	2	0

Members			
RESULTS FOR 2023-2024			
QUARTER	MEMBER GROWTH NET GOAL	MEMBER GROWTH ACTUAL	DROPPED MEMBERS ACTUAL (including transfers)
JULY/AUG/SEPT	50	281	87
OCT/NOV/DEC	50	66	255
JAN/FEB/MAR	50	73	9
APR/MAY/JUNE	20	52	39

GOALS AND ACTUAL NEW CLUBS CUMULATIVE



GOALS AND ACTUAL MEMBERS CUMULATIVE



DROPPED CLUBS: 4

51 CLUBS OF 71 ADDED 1 OR MORE NEW MEMBERS

GENDER DISTRIBUTION

MALE 1,459 (60.74%)
FEMALE 943 (39.26%)

DROPPED MEMBERS

DECEASED	6
CLUB CANCELLED	26
OTHER	358
TOTAL	390

[CLICK HERE FOR CUMULATIVE MEMBERSHIP DATA](#)

TOTAL FAMILY UNIT MEMBERS	1,223
FAMILY MEMBERS PAYING HALF DUES	659